

# Snap Enterprise Data Replicator Advanced Data Management Suite

## Going Beyond Data Protection to Deliver Powerful Remote Data Management

### Features

#### Three Licensed Modules

**Snap EDR Advanced includes everything for advanced data management: a powerful replication agent, and all of the modules in the Advanced data management suite**

#### Remote Data Backup

- **Lowers backup costs by eliminating tape, equipment, and off-site storage at remote sites**
- **Automates backup process throughout the enterprise, reducing dependency on remote staff**
- **Speeds restore time through immediate access to the last version of data**

#### Remote Data Inventory

- **Easily gathers and reports the status of data on remote servers**
- **Provides the basis for data lifecycle management**

#### Remote Data Archive

- **Increases storage utilization on primary servers**
- **Lowers overall cost of storage by moving older data to cost-effective archive storage**
- **Ensures that data is maintained exactly as long as needed**

In addition to replicating and protecting data, many businesses need a robust way to manage the data that they have. Making the most cost-effective use of their data requires the ability to inventory systems to find out what data they have, archive older data away from expensive primary storage, and centralized backup and recovery to automatically move secondary data to long-term storage. Building on the powerful data movement architecture of the Snap Enterprise Data Replicator (Snap EDR) by Adaptec, Snap EDR Advanced provides enterprises with sophisticated data management capabilities.

### Three Steps to Data Lifecycle Management

The Snap EDR Remote Data Inventory solution is the right first step for getting remote data under full control. Once armed with accurate information about the data on your remote systems, you can begin to manage this data, using the same Snap EDR software implemented for Remote Data Inventory.

By adding the Snap EDR Remote Data Archive solution, you can implement a policy-based central archive and remove less-frequently used data from the remote storage server, while maintaining transparent end user access to the data. Snap EDR Remote Data Archive frees up valuable disk space at the edge, shortening backup times, and ensuring data is captured for compliance purposes.

With the Snap EDR Consolidated Backup solution, you can eliminate reliance on inefficient, unreliable and costly tape backups at each remote site with a single consolidated backup process that can lower annual backup costs by up to 75%.

### Powerful, Centralized Control

All Snap EDR Advanced solutions are configured, scheduled, and monitored through the Snap EDR Management Console and are included with the Snap EDR Advanced License. Snap EDR's intuitive installation and browser-based graphical interface provides step-by-step data management and job monitoring and control. The centralized control console can be accessed from anywhere on the network for global access, while email notifications can be set on a per job basis to increase the granularity of event monitoring. All this provides the extra flexibility administrators need for data management.

The console works in conjunction with the agents that live on each server. Once the job is established, the agents do the replication, working directly with each other.

### Network Efficient

Snap EDR works well with any type of network, including high-latency networks. Where bandwidth is limited, Snap EDR can apply bandwidth throttles and use differential data transfer to send only the bytes that have changed from within files. Snap EDR delivers effective replication over high-latency networks.

### Consolidated Backup and Recovery for Remote Data

Uncertainty from unreliable data backup processes at remote systems and branch offices can keep even the most experienced IT professionals awake at night. Individual tape backups at remote sites frequently mean relying on non-technical personnel, maintaining costly backup equipment and software at each office, and ensuring that an offsite storage process is being followed. Despite best efforts, many companies have an uncomfortably high backup failure rate at remote facilities, and as a result have an unacceptable level of risk and exposure.

Consolidated Backup and Recovery with Snap EDR Advanced lowers backup costs by eliminating the need for tape and equipment at remote locations. Backup images are consolidated onto a central server for instant online access to the latest backup images. With centralized management, backup processes for remote sites are automated, reducing or eliminating the dependency on remote staff for backup and recovery. All file attributes and permissions are retained for restoration. The Remote Data Backup module also works with Microsoft Exchange 2000 and Microsoft SQL 2000 to backup live data.

**How it works:**

Snap EDR automatically initiates backup consolidation on a scheduled basis. Backup processes are then executed by Snap EDR Agents, small software agents that reside on all Snap Servers, Windows, UNIX, and Linux systems involved in the process. Snap EDR identifies changes made to remote files since the last backup and moves only the bytes that have changed from those files to the central site, using network bandwidth efficiently and enabling central backup even for sites with narrow bandwidth. At the central site, consolidated data can be kept on disk for nearline backup, or backed up to tape using integrated BakBone NetVault software installed on all new GuardianOS Snap Servers or the existing tape backup software at the central site. If data is not received from any expected site, administrators will be notified, greatly reducing the risk of data loss.

**Remote Data Inventory**

To effectively manage data, you must have insight about the data, such as:

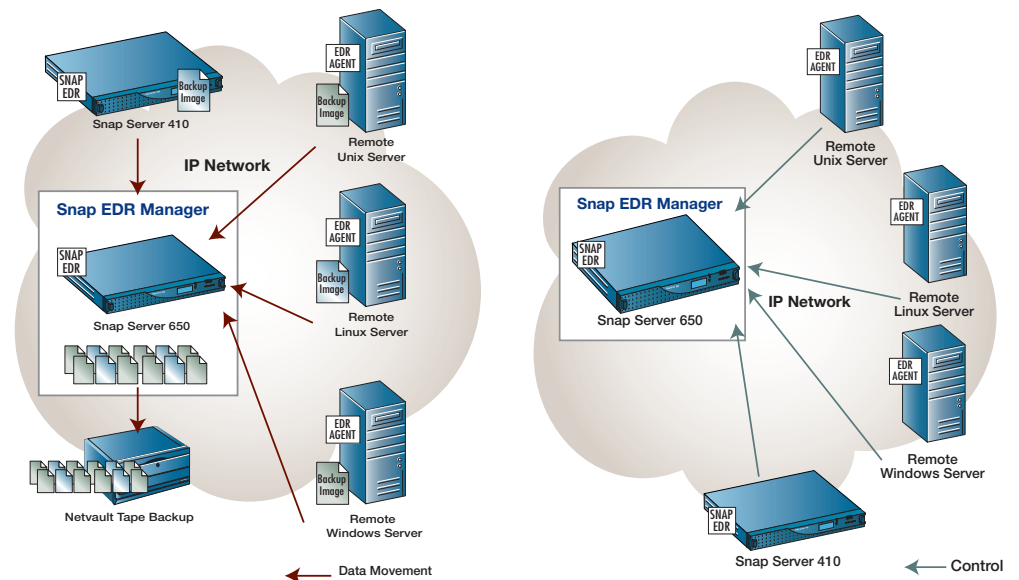
- How much data is there?
- Which files are still in use? When was the data last accessed?
- Who owns the data?
- What types of files are there?

However, getting access to this data profile information can be difficult, particularly on heterogeneous Snap Servers, Windows, UNIX, and Linux systems and attached storage outside the data center. The Snap EDR Advanced Remote Data Inventory solution automates profiling and central reporting of data on Snap Server, Windows, UNIX, and Linux systems, and any attached storage.

**How it works:**

Through the Snap EDR Management Console, the central web-based control center for Snap EDR, users select systems for data inventory, choose among a variety of file and data attributes to be reported, and schedule one-time or periodic ongoing profiling. Data inventory processes are then executed by Snap EDR Agents, small software agents that reside on all Snap Servers, Windows, UNIX, and Linux systems involved in the process.

Snap EDR Agents will scan selected directories on the remote systems and capture file and data attributes, aggregate the information for all profiled nodes, and email the report to the designated user.



**Remote Data Archive**

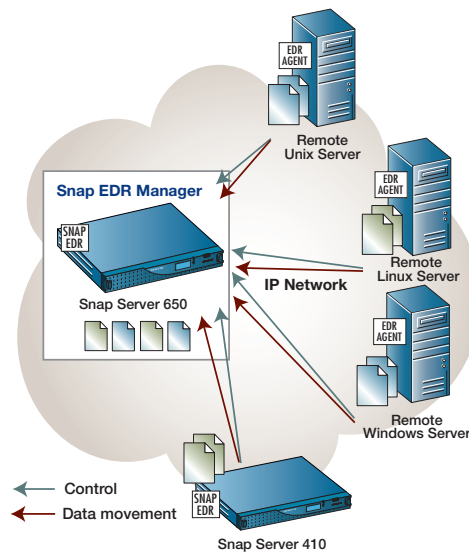
In many companies, unmanaged, unused information is clogging valuable storage space, exceeding the capacity of backup equipment and tapes and causing missed backup windows. This problem is most acute on systems outside the data center or in branch offices where, often, there is no IT staff on hand to help manage the remote data. Statistics show that if a file has not been accessed in 90 days, it has only a 2% likelihood of ever being accessed again. Continually storing and backing up this infrequently used data is inefficient and costly. A best practice approach to handling this data is to archive unused data to lower-cost disks while retaining easy end user access to the data.

The Snap EDR Advanced Remote Data Archive solution reclaims valuable storage by automating policy-based archive of files for Snap Servers, Windows, UNIX, and Linux systems, and any attached storage. By moving stale data from primary servers, administrators can increase storage utilization, and make archive storage for older files much more cost-effective.

**How it works:**

Archive processes, policies, and schedules are set up through the Snap EDR Management Console, a central web-based control module. Archive processes are then executed by Snap EDR Agents, small software modules that reside on all Snap Servers, Windows, UNIX, and Linux system involved in the process.

On a scheduled basis, the Snap EDR Agents will scan directories on the remote systems and identify files that should be archived according to the policies established. Some examples of archive policies are: time since last access, size of file, type of file, etc. The file is then moved from the remote system to a central archive. On Windows servers a small file “stub” is left in its place on the remote system, so that when archived files are requested (2% likelihood), the file is transparently retrieved from the archive location so that users can access the file normally.



**Specifications**

**Required Components**

- At least one source server and one or more target servers (Snap Servers<sup>1</sup> or Application Servers)
- Two or more licensed copies of Snap EDR Advanced Agent software (each Snap EDR agent requires a unique license)<sup>2</sup>
- Standard IP network access with one of the following web browsers:
  - Internet Explorer 5.5 or greater
  - Netscape™ Navigator™ 4.77 or greater

**Software Maintenance**

- Unlimited 24x7 Tech Support calls for basic troubleshooting, diagnostics, configuration, and installation are included for the contract term.
- Unlimited software support, bug fixes, software updates, and upgrades.

**Snap Server Models Supported**

Requires GuardianOS v 3.1 or higher

- Snap Server 650
- Snap Server 520
- Snap Server 510
- Snap Server 410
- Snap Server 210
- Snap Server 110

**Application Server Operating System Support**

GuardianOS v3.1 or higher  
 AIX 4.3, 5.1, 5.2  
 Solaris 5.7, 5.8  
 HP-UX 11.x, 11i  
 Fedora Linux, RedHat Linux 7.2, 7.3, Enterprise Linux 2.1 or 3.0, or SUSE LINUX 8.2 and 9.0  
 Windows 2000 (with SP2 or higher), Windows 2003, Windows Server Appliance Kit (SAK) 2.01, or Windows XP

**Management Console Operating System Support**

GuardianOS v3.1 or higher running on supported Snap Servers

**System Memory**

128MB or more

**Disk Space**

Installation Directory: 100MB

**Network Connection**

100MB/s Ethernet or faster

**Application Support for Remote Data Backup**

Microsoft Exchange 2000  
 Microsoft SQL 2000

<sup>1</sup> Snap EDR not supported on any SnapOS-based Snap Servers.

<sup>2</sup> Snap EDR is not compatible with any version of Server-to-Server (S2S) Synchronization software for Snap Servers

For Snap Server 650, 550, 520, 510, 4xxx	Part Number
Snap EDR Advanced for Department	5325301934
Snap EDR Express to Snap EDR Advanced Upgrade for Department	5325301949
Snap EDR to Snap EDR Advanced Upgrade, All Platforms	5325301942
For Snap Server 410, 210, 110	
Snap EDR Advanced for Workgroup	5325302020
Snap EDR Express to Snap EDR Advanced Upgrade for Workgroup	5325302022
Snap EDR to Snap EDR Advanced Upgrade, All Platforms	5325301942
For Snap Server 1xxxx	
Snap EDR Advanced for Enterprise	5325301935
Snap Server Model Independent	
Snap EDR Advanced for Windows/Linux Servers	5325301936
Snap EDR Advanced for Windows Advanced/UNIX Servers	5325301937
Snap EDR Software CD Kit	5325301889



691 South Milipitas Boulevard  
 Milpitas, CA 95035

888.343.7627 Tel  
 408.262.2533 Fax

Copyright 2007 Adaptec, Inc. All rights reserved. Adaptec, the Adaptec logo, Snap Appliance, the Snap Appliance logo, Snap Server, Snap Disk, GuardianOS, SnapOS, and Snap Server Storage Manager are trademarks of Adaptec, Inc., which may be registered in some jurisdictions. Microsoft and Windows are registered trademarks of Microsoft Corporation, used under license. All other trademarks used are owned by their respective owners.

Information supplied by Adaptec, Inc., is believed to be accurate and reliable at the time of printing, but Adaptec, Inc., assumes no responsibility for any errors that may appear in this document. Adaptec, Inc., reserves the right, without notice, to make changes in product design or specifications. Information is subject to change without notice.

P/N: 986707-016 Printed in U.S.A. 01/07 3630\_3.5