

Snap Server Manager

Scalable, Centralized Storage Management for the Distributed Enterprise

Features

Scalable, Centralized Storage Management

Automated Device Discovery

Comprehensive Reporting

Exception Management

Automated Actions and Scheduling

Server Grouping for Business-Centric Views

Monitoring and Event Notification

The reliance on business-critical, enterprise-wide applications such as Customer Relationship Management (CRM), Point-of-Sale (POS) transaction-based systems, email, and databases have driven enterprises to deploy and maintain complex storage infrastructures. As a result, distributed enterprises must contend with rapidly growing data volumes, gain visibility into how data is being used, and enable efficient access to data from remote offices. The need for 24x7 data availability and the demands of managing a diverse architecture with different standards and technologies have increased the cost of network and storage management.

The Snap Server Manager by Adaptec offers an efficient and powerful tool for managing a Snap Server by Adaptec storage infrastructure. Snap Server Manager is a Java™ technology-enabled, platform-independent management solution that allows an enterprise to rapidly deploy, configure, and manage a complete enterprise storage network. Snap Server Manager provides a business-centric view, allowing IT Managers to focus their resources on enhancing data availability and protection, enabling business continuance, increasing return on investment (ROI), and lowering total cost of ownership (TCO).

Scalable, Centralized Storage Management

Snap Server Manager reduces costs by enabling enterprises to manage numerous terabytes of Snap Server storage with minimal IT resources. This application optimizes resource utilization and improves overall productivity by using a single console to manage a storage infrastructure with multiple Snap Servers. An intuitive GUI provides centralized management of the entire storage infrastructure, including physical devices, global network

configuration and administration, and capacity planning.

Snap Server Manager has a Java technology-enabled graphical user interface (GUI) that can be accessed from any workstation. It does not require additional third-party software or utilities and operates across major platforms including HP-UX, IBM AIX, Linux, Mac OS, Microsoft Windows, and Sun Solaris.

| Name | Status | OS | Old Version | Disk Usage |
|--------------|--------|------------|-------------|------------|
| Server Group | OK | GuardianOS | 3.0.396 | 21% used |
| Server | OK | GuardianOS | 3.0.393 | ? |
| Server | OK | GuardianOS | 3.0.396 | 14% used |
| Server | OK | GuardianOS | 3.4.895 | ? |
| Server | OK | GuardianOS | 3.1.930 | 0% used |
| Server | OK | GuardianOS | 3.0.396 | 0% used |
| Server | OK | GuardianOS | 3.5.002 | 0% used |
| Server | OK | GuardianOS | 2.0.950 | 0% used |
| Server | OK | GuardianOS | 3.0.396 | 0% used |
| Server | OK | SnapOS | 3.4.930 | ? |
| Server | OK | SnapOS | 3.4.896 | ? |
| Server | OK | SnapOS | 4.0.830 | ? |
| Server | OK | GuardianOS | 3.0.396 | 42% used |
| Server | OK | GuardianOS | 3.0.396 | 12% used |
| Server | OK | GuardianOS | 3.0.396 | ? |
| Server | OK | SnapOS | 4.0.830 | ? |
| Server | OK | SnapOS | 3.1.626 | ? |
| Server | OK | GuardianOS | 3.0.393 | 0% used |
| Server | OK | SnapOS | 4.0.832 | ? |
| Server | OK | SnapOS | 4.0.824 | ? |
| Server | OK | GuardianOS | 3.0.396 | 0% used |

Centralized Management. Reliable and easy-to-use centralized administration scales easily, simplifies storage visibility and knowledge, and increases productivity.

Automated Device Discovery

Snap Server Manager automates the discovery of SnapOS- and GuardianOS-powered Snap Servers (local and remote) in a fraction of the time needed by manual administration. This provides instant environmental visibility, knowledge, and control.

IT Managers can leverage access to this real-time data analysis to efficiently manage Snap Server storage resources. By reducing related labor and operational costs, enterprises are able to manage more information with fewer resources.

Comprehensive Reporting

Enterprises have long been forced to use spreadsheets and manual efforts to collect environmental information. The data is normally hard to find, must be manually acquired, and is usually outdated within hours of collection.

With a simple and efficient click of a mouse button, Snap Server Manager offers immediate in-depth information of Snap Server storage assets and how they are being utilized.

| Property | Value |
|----------------------------------|-------------------|
| Ethernet (MAC) Address | 00 C0 9F 0B A3 3E |
| Java JVM Version | 1.4.1_01-b01 |
| Java Framework Version | 1.2 |
| Web Port | 80 |
| Memory Size | 503 MB |
| Platform Bytes | 06 00 00 |
| NIC Count | 2 |
| Drive Count | 4 |
| Power Supply Count | 1 |
| Fan Count | 1 |
| CPU Count | 1 |
| CPU Speed | 998 MHz |
| Expansion Unit Count | 0 |
| Discovering Server | Unknown |
| Configuration Status | Fully configured |
| Licensed for Snap Server Manager | No |

Status
Server PURS303030 is online.

- Drive: OK
- MIC: OK
- Power Supply: OK
- Fan: OK
- System Temp: OK
- CPU Temp: OK

Disk Usage

Total: 135.59 GB
 Used: 0 GB (0%)
 Free: 135.59 GB (100%)

Reporting. Snap Server Manager's comprehensive analysis, in-depth information and reporting capabilities eliminate the need for manual collection and spreadsheets, giving enterprises accurate knowledge about their Snap Server storage assets.

Exception Management

Reactive management (manually resolving storage problems only after they have evolved into real business issues) can negatively impact an enterprise's access to critical data. Users desire a single, consistent proactive management approach to increase efficiencies, increase service levels, and lower operating costs.

Snap Server Manager removes the risks associated with managing complex environments so enterprises can take action before major problems occur. The status of each Snap Server is clearly displayed with color indicators, making it very easy to sort by problem criticality. Significant storage events can now be quickly viewed, analyzed, and corrected.

Automated Actions and Scheduling

Managing a complex network-attached storage (NAS) environment can be time consuming and prone to costly errors. Complexity and costs grow when multiple NAS devices must be expertly managed — productivity is at risk and applications become vulnerable to access outages of critical data.

Snap Server Manager automates routine storage maintenance tasks such as configuring storage network settings, updating software and firmware, adding and retiring Snap Server storage assets, monitoring and notification, and capacity utilization reporting. Snap Server Manager can easily schedule maintenance during off-peak hours to minimize business disruptions and can automatically create and send email reports to confirm a successful operation.

Administer Servers

Server Settings

- Server Name
- Orderline
- Admin Password
- Email Notification
- SSH
- UPS

Network Settings

- TCPIP
- DHCP
- Windows
- Apple
- NFS
- MS
- FTP
- SNMP
- Web

Maintenance

- Shutdown
- Restart
- OS Update

Administering your selected servers.

- Enable one or more operations in the list on the left. Check to enable. Uncheck to disable.
- Click View/Copy to view the current operation settings for all selected servers, or to copy current settings from a specific server.
- Edit the operation settings, and click Apply to save these settings to all selected servers.

Apply Schedule

Specify a day and time to start the operations.

Day: Today - Wed, April 14, 2004

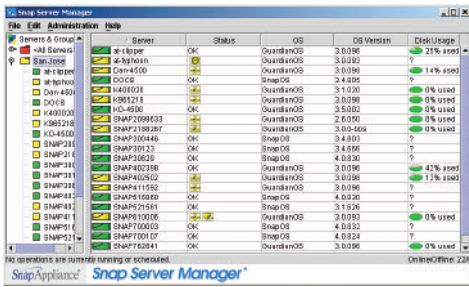
Time: 7:07 PM

Automated Actions and Scheduling. There are over 15 server, network, and maintenance settings that can be applied to single or multiple Snap Servers to ease enterprise-wide deployment and management of a distributed storage infrastructure.

Server Grouping for Business-Centric Views

Snap Server Manager provides customized groupings so IT managers can administer their Snap Server storage infrastructure in the way that best fits their business: by department, by location, by application, or by user.

Snap Server Manager lets users simultaneously configure a group of Snap Servers in a single operation to eliminate redundant administrative tasks, reduce errors and assure consistent settings across servers. In addition, IT managers can generate business-centric reports based on the server grouping for capacity planning or chargeback purposes.



Monitoring and Event Notification

Snap Server Manager automatically monitors the Snap Server environment, discovers events that could impact business processes, and proactively notifies users. IT Managers simply click on any individual server to get detailed status information or drill-down to determine the root cause and take immediate corrective action. IT Managers can enable SMTP to automatically receive email notification on critical events such as server reboot, server overheat, RAID set degradation, disk drive failure, or disk space utilization.

Business-Centric Views. IT Managers can logically group Snap Servers according to their business requirements and perform global operations on that server group.

| Models | Feature | How Does it Work | Benefit |
|---|--|---|--|
| <i>Note: Multi-server discovery and single-server management is provided with every Snap Server; multi-server management is optional for GuardianOS-based Snap Servers and sold on a per-license basis.</i> | | | |
| Scalable, Centralized Storage Management | Single console Intuitive Graphical User Interface (GUI) Flexible Scheduling | Single console Intuitive Graphical User Interface (GUI) | Single console Intuitive Graphical User Interface (GUI) |
| Automated Device Discovery | Auto-discovery of storage Local and remote storage discovery, monitoring and management | Immediately locates all Snap Servers on the network Locates Snap Servers on other subnets by identifying just one remote Snap Server | Quickly and efficiently sees, monitors, and manages any existing and new Snap Server storage Optimizes resource utilization and improves overall productivity by using a single console for discovery |
| Comprehensive Reporting | Robust standard reports and in-depth information gathering Storage reporting | Delivers Snap Server storage reports via email Indicates how many Snap Servers are being used on the network and their associated owners | Makes information quickly available for faster decision making Improves IT Manager productivity through better understanding of the Snap Server storage environment |
| Exception Management | Status displays with color indicators Sort by status | Uses the spotlight paradigm to display the current health of each Snap Server Causes problems to rise to the top of the list | Allows significant events to be quickly viewed and corrected Improves service levels by identifying problems and addressing them proactively Automated Actions and Scheduling |
| Automated Actions and Scheduling | Routine storage task automation Schedule maintenance storage tasks | Schedules tasks such as configuring network settings and updating software to run based on predefined criteria Easily schedules storage-related tasks to off-peak hours | Reduces the chance for errors caused by manual operations Minimizes business disruptions and automatically notifies upon task completion |
| Server Grouping for Business-Centric Views | Business process views of storage Chargeback reports | Groups Snap Servers by logical business model for global operations or reporting Associates usage and costs to a Snap Server | Manages the business, not Snap Servers; eliminates redundant tasks and reduces errors Ensures accurate allocation of IT resources based on usage |
| Monitoring and Event Notification | Storage monitoring Event notification | Monitors the health of the Snap Server environment and provides detailed status information Sets alerts and email notifications to specific IT Managers based on critical events | Ensures data availability and allows for proactive problem resolution Reduces risk of application downtime |



691 South Milipitas Boulevard
Milpitas, CA 95035

888.343.7627 Tel
408.262.2533 Fax

Copyright 2006 Adaptec, Inc. All rights reserved. Adaptec, the Adaptec logo, Snap Appliance, the Snap Appliance logo, Snap Server, Snap Disk, GuardianOS, SnapOS, and Storage Manager are trademarks of Adaptec, Inc., which may be registered in some jurisdictions. Microsoft and Windows are registered trademarks of Microsoft Corporation, used under license. All other trademarks used are owned by their respective owners.

Information supplied by Adaptec, Inc., is believed to be accurate and reliable at the time of printing, but Adaptec, Inc., assumes no responsibility for any errors that may appear in this document. Adaptec, Inc., reserves the right, without notice, to make changes in product design or specifications. Information is subject to change without notice.

P/N: 986737-014 Printed in U.S.A. 07/06 3202_4.7